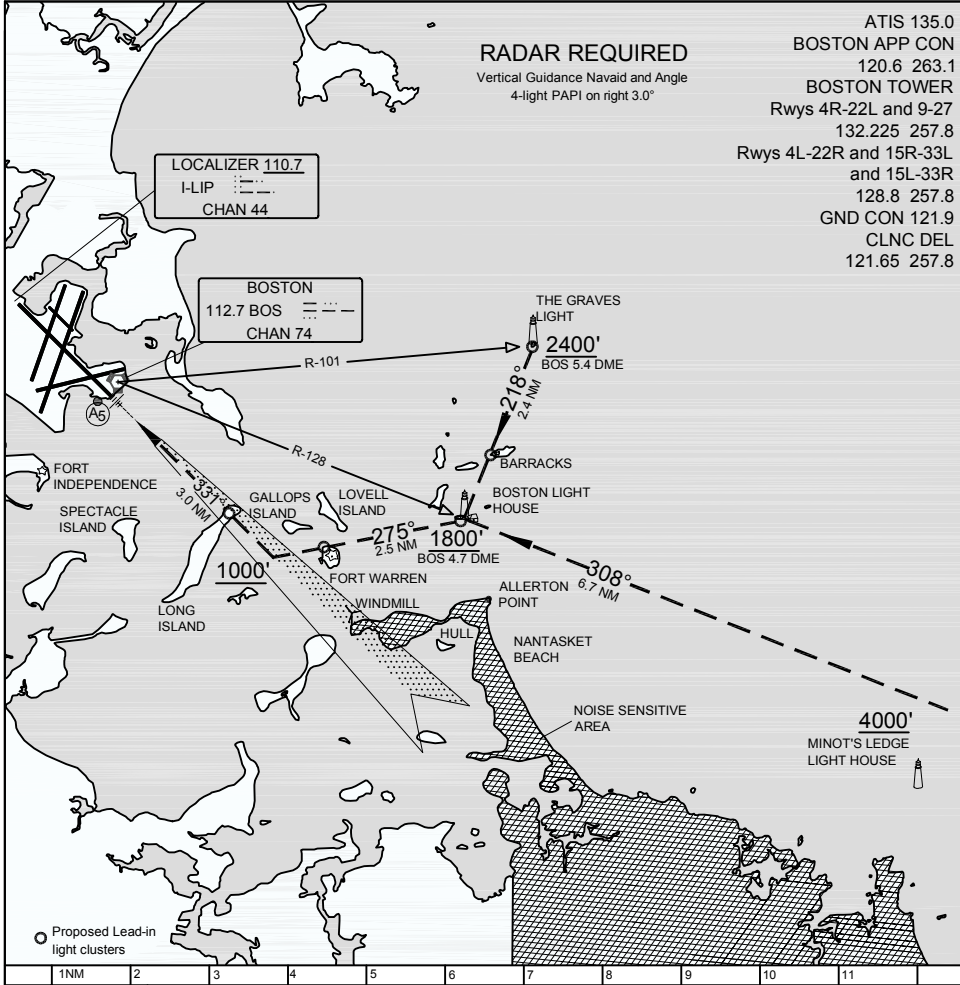


# FORT VISUAL RWY 33L BOSTON/GENERAL EDWARD LAWRENCE LOGAN INTL (BOS) BOSTON, MASSACHUSETTS



**RADAR REQUIRED**  
 Vertical Guidance Navaid and Angle  
 4-light PAPI on right 3.0°

## FORT VISUAL RUNWAY 33L

From South:

Expect Radar Vectors from Marshfield-Harlow airport (not depicted; approx. 21 DME) to BOS 128° radial abeam Minot's Ledge Lighthouse. Follow radial on a 308° heading to the Boston Light, cross Boston Light House at or above 1800', turn westbound on a heading of 275°, continue over Fort Warren, turn right on a 331° heading to join final approach course at or above 1000'. Runway 33L LOC, MALSR, and PAPI available for final course guidance.

From North:

Expect Radar Vectors East of Nahant to The Graves Light. Cross The Graves Light at or above 2400'. Follow a course to the Boston Light House, cross Boston Light House at or above 1800', turn westbound on a heading of 275°, continue over Fort Warren, turn right on a 331° heading to join final approach course at or above 1000'. Runway 33L LOC, MALSR, and PAPI available for final course guidance.

Weather requirements: TBD.

# FORT VISUAL RWY 33L BOSTON/GENERAL EDWARD LAWRENCE LOGAN INTL (BOS) BOSTON, MASSACHUSETTS

Prepared by ASRC  
 4255 Pheasant Ridge Dr.  
 Suite 402  
 Minneapolis, MN 55449

**DRAFT ONLY - NOT FOR PUBLICATION**