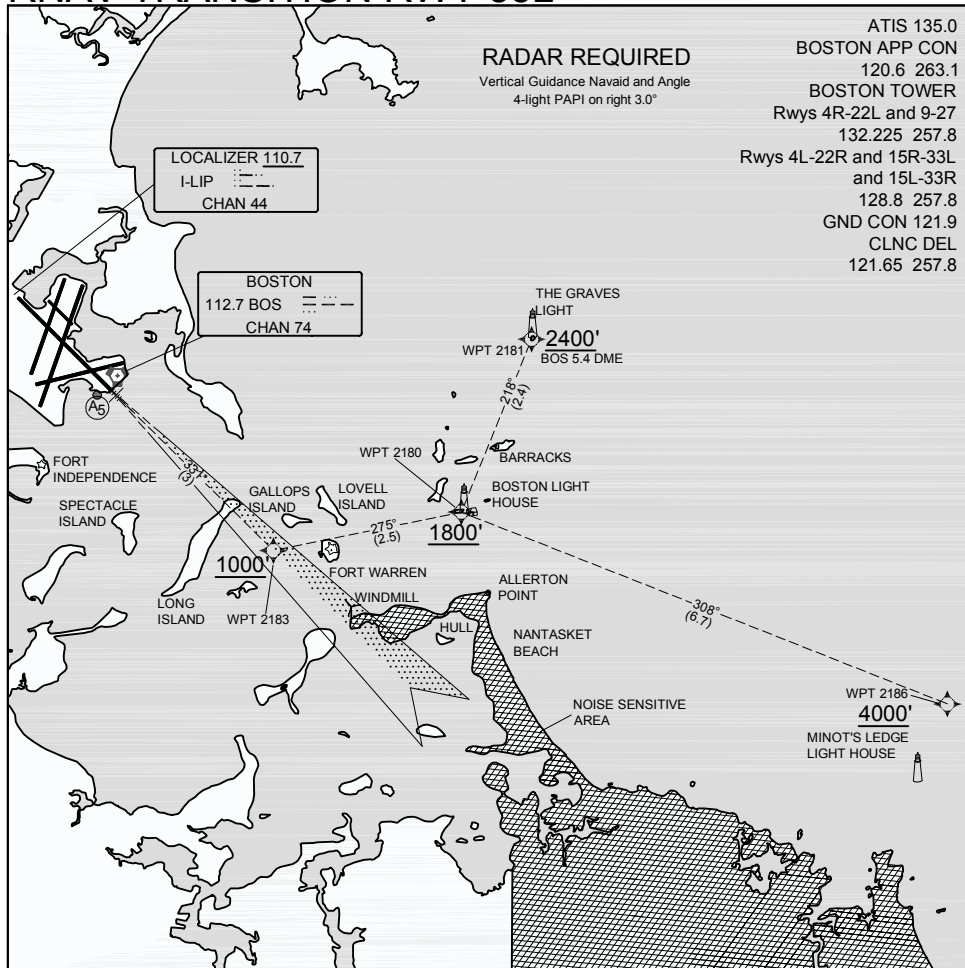


BOSTON/GENERAL EDWARD LAWRENCE LOGAN INTL (BOS)

RNAV TRANSITION RWY 33L

BOSTON, MASSACHUSETTS



ATIS 135.0
 BOSTON APP CON
 120.6 263.1
 BOSTON TOWER
 Rws 4R-22L and 9-27
 132.225 257.8
 Rws 4L-22R and 15R-33L
 and 15L-33R
 128.8 257.8
 GND CON 121.9
 CLNC DEL
 121.65 257.8

RADAR REQUIRED

Vertical Guidance Navaid and Angle
 4-light PAPI on right 3.0°

LOCALIZER 110.7
 I-LIP
 CHAN 44

BOSTON
 112.7 BOS
 CHAN 74

WAYPOINT LOCATIONS:

WPT 2181	N 42° 21' 52.96" W 70° 52' 10.69"	2400'
WPT 2186	N 42° 17' 09.11" W 70° 45' 01.28"	4000'
WPT 2180	N 42° 19' 40.05" W 70° 53' 24.99"	1800'
WPT 2183	N 42° 19' 11.36" W 70° 56' 40.78"	1000'

DME/DME, DME/DME/IRU, OR GPS REQUIRED.

PILOTS ARE TO ADVISE ATC PRIOR TO FINAL APPROACH WHEN THE AIRPORT OR PRECEDING TRAFFIC IS IN SIGHT AND A VISUAL APPROACH CLEARANCE MAY BE ACCEPTED.

PILOTS PLANNING TO EXECUTE AN RNAV TRANSITION MUST REQUEST THE PROCEDURE FROM BOS APPROACH ON INITIAL CONTACT.

WEATHER REQUIREMENTS: TBD.

FORT VISUAL RWY 33L 42°22'N-71°00'W BOSTON, MASSACHUSETTS BOSTON/GENERAL EDWARD LAWRENCE LOGAN INTL (BOS)

Prepared by ASRC
 4255 Pheasant Ridge Dr.
 Suite 402
 Minneapolis, MN 55449

DRAFT ONLY - NOT FOR PUBLICATION